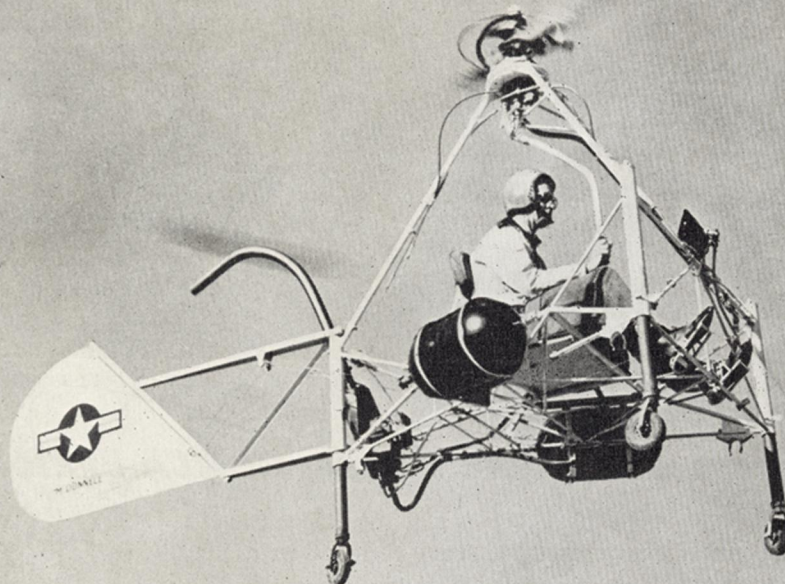


15¢

# SCIENCE NEWS LETTER

Vol. 52, No. 23

THE WEEKLY SUMMARY OF CURRENT SCIENCE • DEC. 6, 1947



**Jet Helicopter**

See Page 360

A SCIENCE SERVICE PUBLICATION



At RCA Exhibition Hall, radio, television, and electronics are on parade in thrilling exhibits.

## **"World's Fair" of radio-electronic wonders...RCA Exhibition Hall**

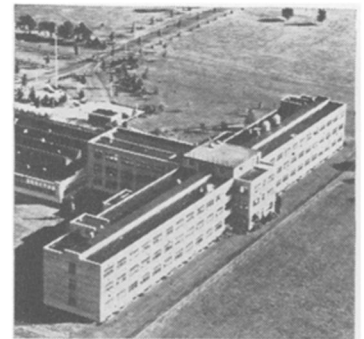
100,000 visitors every month—that's how people have responded to the new and fascinating RCA Exhibition Hall in Radio City, New York.

Like a "World's Fair," this is a place where you can watch, and even operate, many recent developments of RCA Laboratories. Television, radio, loran, the electron microscope, and other scientific achievements . . . you'll find them "on show," and thrilling to see.

For instance: step on a platform and televise yourself, see yourself in action on a television screen. Watch radio

waves heat steel red-hot in a jiffy. Hear new RCA-Victor recordings. Take home a souvenir message from globe-encircling RCA Communications—see Radiomarine's radar and how the NBC Network operates to bring its "Parade of Stars" to your home.

Conveniently located in the heart of Radio City—at 40 West 49th Street—RCA Exhibition Hall is open 11 a. m. to 9 p. m. daily. Everyone is welcome, there is no admission charge. *Radio Corporation of America, RCA Building, Radio City, New York 20, N. Y.*



RCA Laboratories, Princeton, N. J., a great research center, and "birthplace" of many of the radio-electronic achievements shown at RCA Exhibition Hall. Research conducted here is reflected in the fine quality in any product bearing the names RCA, or RCA Victor.



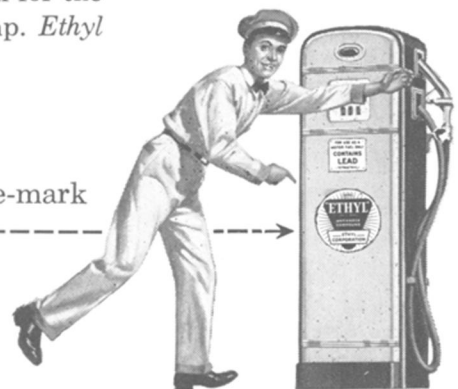
**RADIO CORPORATION of AMERICA**



if gasoline came on spools . . .

all the information you'd like to have about ingredients could be printed and pasted right on the spool. However, gasoline can't be labeled that way. So oil companies everywhere put "Ethyl" trade-marks on their pumps, to show you at a glance that their best gasoline contains "Ethyl" antiknock fluid. This important ingredient, which is made by the Ethyl Corporation, is mixed with gasoline to step up power and performance. Motorists who want to get the best out of their cars—new or old—look for the familiar yellow-and-black "Ethyl" emblem on the pump. *Ethyl Corporation, New York.*

look for the "ETHYL" trade-mark



Helping America's Progressive Petroleum Industry Make Better Gasoline