



Getting Around In New York City

While these photographs are intended as an aid to those attending the New York science meetings, those unable to attend may wish to save them for use during their next New York trip.

The airplane photograph printed above shows the part of New York of most interest during the science meetings. Locate your hotel. A study of the photograph will enable you to visualize the city. The Broadway subway follows this curving street, and famous Fifth Avenue is also clearly shown.

The five keys to New York transportation for the Christmas meetings are:

The Broadway-Seventh Avenue Subway.

The Sixth Avenue-Columbus Avenue Elevated.

The Fifth Avenue Busses.

Taxicabs.

Walking.

The following are recommended routes:

Hotel District to American Museum of Natural History—Take uptown elevated on Sixth Avenue at 33d, 38th, 42d or 50th Street, alighting at 81st Street Station at corner of Museum Square. Or take I. R. T. westside uptown local subway at Pennsylvania Station, Times Square, 50th and Broadway or Columbus Circle, alighting at 79th Street and walking east

two blocks.

Hotel District to Columbia University—Take I. R. T. Broadway westside uptown subway, at Pennsylvania Station, Times Square, 50th Street or Columbus Circle, being sure to take a train labeled "Broadway-7th Avenue", alighting at 116th Street. Or take northbound buses on Fifth Avenue (if you have the time), numbers 1, 4, 5 or 8, asking the conductor to let you off at stop nearest Columbia University.

Hotel District to American Geographical Society—Take I. R. T. Broadway uptown subway as for Columbia Univer- (Turn to next page)



THE AMERICAN MUSEUM OF NATURAL HISTORY, as seen from the air shortly before the new wing was completed



PROF. HENRY FAIRFIELD OSBORN, president of the American Museum of Natural History and of the American Association for the Advancement of Science

sity continuing to and alighting at 157th Street.

Hotel District to Metropolitan Museum of Art—Take northbound Fifth Avenue buses numbers 1 and 4, alighting at the museum. Or during rush hours take I. R. T. east side uptown subway at Grand Central Terminal (reached by shuttle from Times Square) alighting at 86th Street and walking three blocks west to Central Park.

Hotel District to Engineering Societies Building—Walk or taxi to 29 West 39th Street.

Columbia University to American Museum of Natural History—Take downtown local subway at 116th Street, alighting at 79th Street and walking east two blocks.

Columbia University to American Geographical Society—Take uptown subway at 116th Street, alighting at 157th Street.

Columbia University to Metropolitan Museum of Art—Take southbound buses numbers 1 or 4 at 116th or 120th Street and Riverside Drive, alighting at the museum. Or taxi.

American Museum of Natural History to Metropolitan Museum of Art—Taxi or walk eastward across Central Park.

Don't use taxicabs for short trips during crowded hours in the downtown districts, or for long trips northward or southward, as for instance between hotel and American Museum or Columbia University. Walk when downtown, and use the subway or elevated for the long north and south

trips. Don't use surface cars unless you want the experience.

Science News-Letter, December 22, 1928

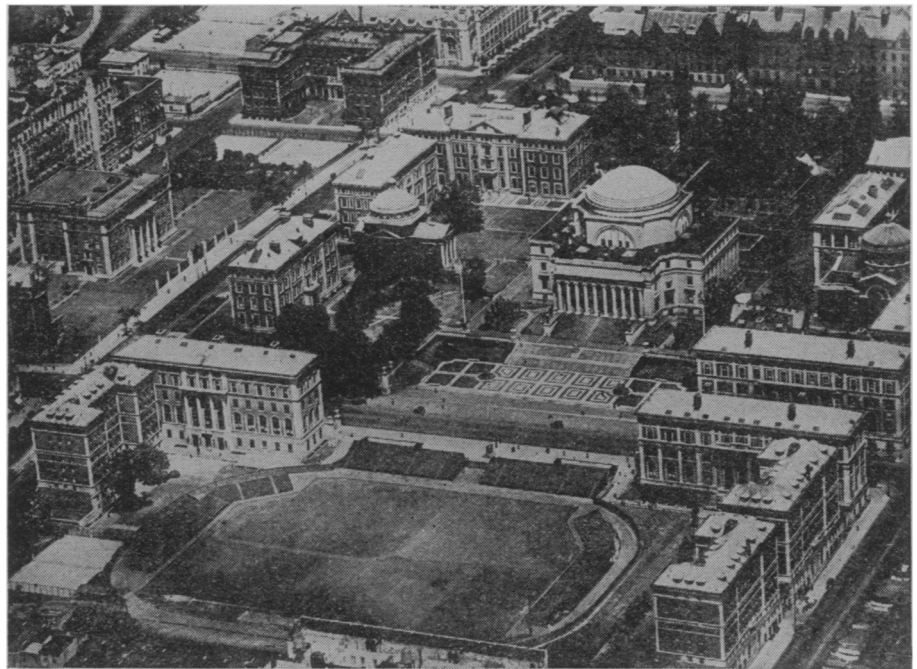
Millions of Words

General Science

Statistically inclined scientists may make their own estimates of the number of words that will be spoken, both in and out of meeting, when some 6000 scientists attend some 400 ses-

sions and deliver some 1500 papers before sections and affiliated societies of the American Association for the Advancement of Science meeting in five large scientific institutions of New York this Christmas-New Year's week.

The next two issues of the SCIENCE NEWS-LETTER will give interesting accounts of the most important addresses and papers.



Airplane photographs by Fairchild Aerial Surveys, Inc.

COLUMBIA UNIVERSITY AS SEEN FROM AN AIRPLANE. The white building with the dome is the Library, the low building in back of it is University Hall, where registration for the A. A. A. S. meeting will take place